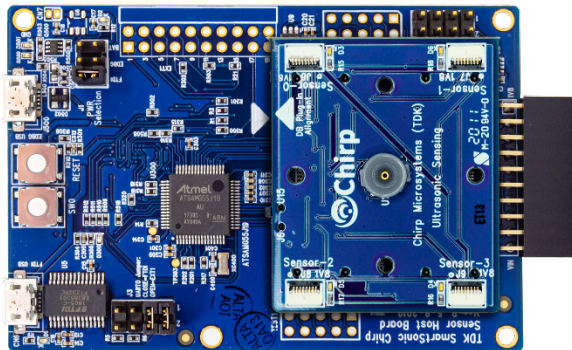


### OVERVIEW

The DK-CH201 is a comprehensive development platform for CH201, a long-range ultrasonic time-of-flight sensor with a range of us to 5m. The development kit is equipped with an on-board CH201 sensor and up to four external CH201 sensor modules can be connected to the board via flat-flex cables for easy prototyping.



Part of the SmartSonic platform, the DK-CH201 is designed around Atmel's SAMG55 Cortex-M4 MCU and can be used by developers for rapid evaluation and development of CH201 based solutions. The DK-CH201 includes an on-board Embedded Debugger so external tools are not required to program or debug the SAMG55 MCU.

The development kit comes with necessary software including SonicLink, a GUI-based development tool and embedded drivers for CH201.

SonicLink is a GUI-based development tool included with the platform. It can be used to capture and visualize the sensor data from the on-board CH201 ultrasonic sensor and external CH201 or CH101 sensor modules.

### KEY FEATURES

- Ultralow power range sensing
- Accurate range measurement regardless of target size
- Detects objects of any color, including optically transparent ones
- Immunity to ambient noise
- Works under any lighting condition
- Synchronized multi-sensor operation enables 2D and 3D range sensing
- Wide field-of-view (FoV)

[invensense.tdk.com/dk-ch201](https://invensense.tdk.com/dk-ch201)